

1 2 3 4 5 6

A

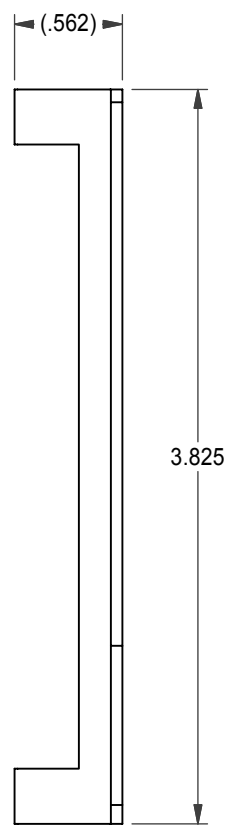
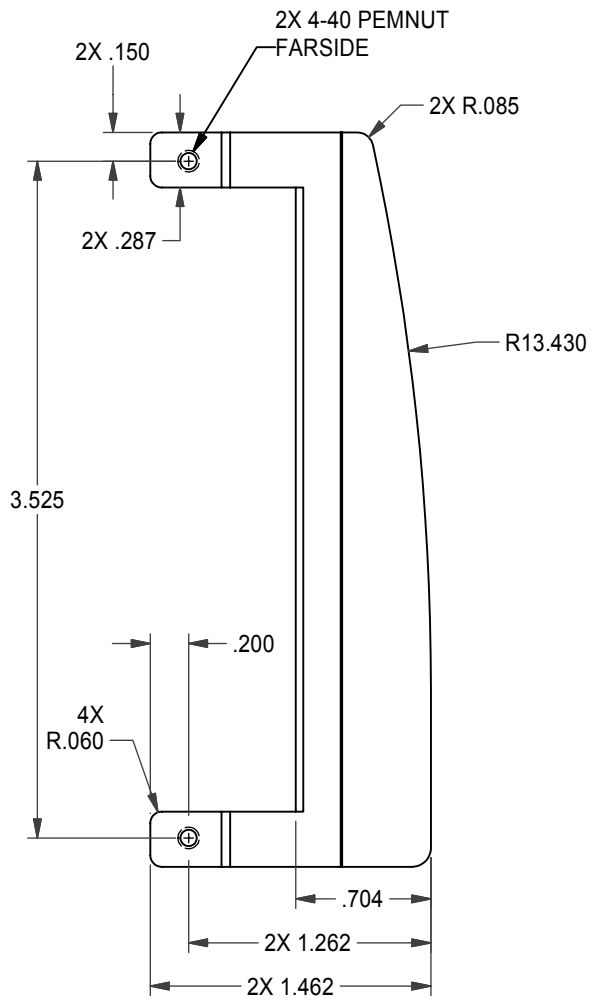
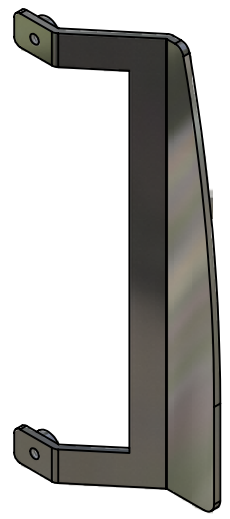
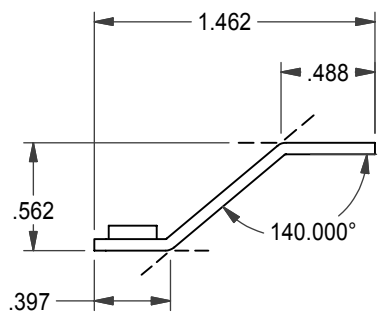
B

C

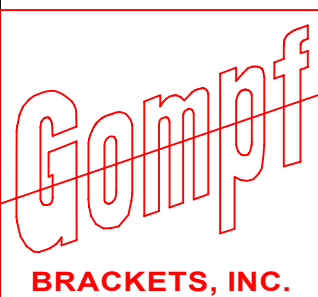
D

E

F



SHEETMETAL SOLUTION FOR STANDARD PLASTIC RETAINER BASED ON PCI SPEC REVISION 3.0



| | |
|--|--------------------|
| DRAWN BY: Valen | DATE: 7/28/2005 |
| APPROVALS: | |
| MATERIAL: .060" CRS | |
| FINISH: Bright Nickel | |
| TOLERANCES: STD. TOLS. ± 0.010 RAD. TOLS. ± 0.01 HOL. TOLS. ± 0.005 MAT. TOLS. ± 0.002 | |

Gompf Brackets, Inc.

12426 Suite C Mukilteo Speedway - Mukilteo, WA 98275
425-348-5002 (phone) 425-348-5150 (fax)
sales@bracket.com -- www.bracket.com

| | | | | | | |
|---------------------|--|------------|---------------|-----------------------------------|-----------|-----------------|
| COPYRIGHT PROTECTED | | SIZE: A | SCALE: 1:1 | GOMPf PART NUMBER: 9145-0000LC | REV: 0 | THIRD ANGLE |
| CUSTOMER NAME: | | | | CUSTOMER PART NUMBER: | | |

1 2 3 4 5 6